



Farmland Protection Policy Act (FPPA): Program Overview and NRCS Responsibilities

Michael Robotham

Bob Dobos

and

Emmabelle Kenyon



Topics to be addressed:

- **Brief history of FPPA**
- Where does it apply?
- Requirements and “who does what?”
- Land evaluation / site assessment (LESA)
- **Reporting requirements (CPA-2)**
- Other issues
- **Questions**



Farmland Protection Policy Act (FPPA)

Passed by Congress in 1981 (7 USC 4201
and 7 CFR Ch. VI Part 658)

Purposes:

Minimize Federally-aided conversion of
farmland

Consider alternative actions

Assure that Federal programs are
compatible with State and local
programs to protect farmland.



How does one “comply with FPPA”?

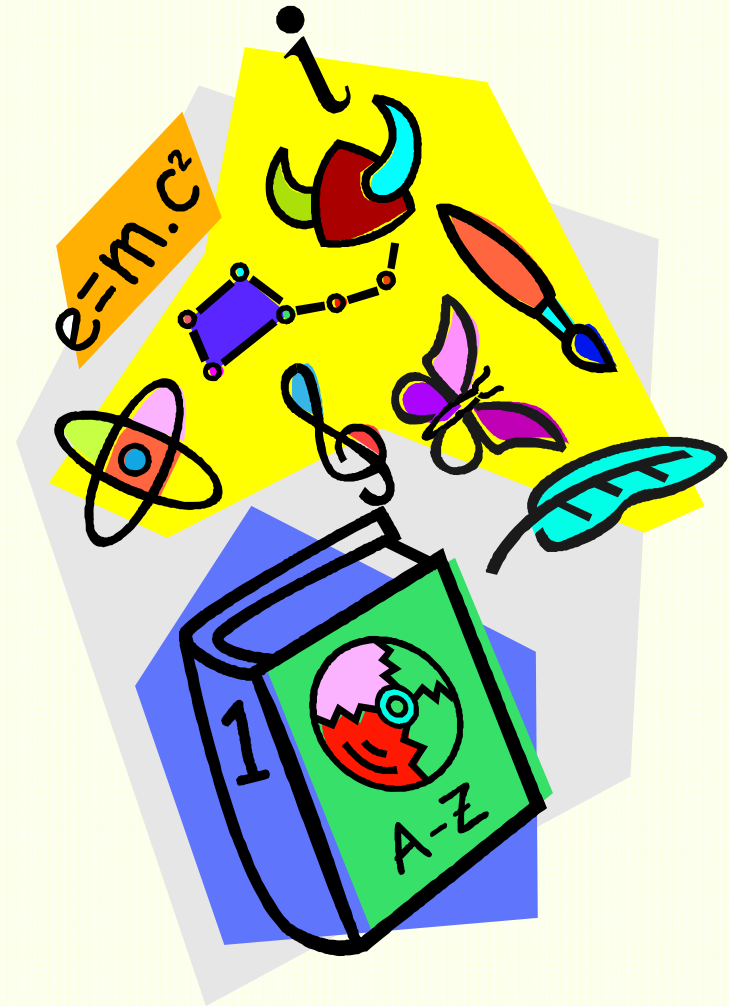
FPPA applies if an **activity** meets these conditions:

- **Federal funds** are involved
- **Irreversible conversion** of **prime, unique** or **important farmland** to **non-agricultural use**
- None of the **exemptions** to FPPA apply

Form (AD-1006 or CPA-106) required



Key terms and concepts





Activity

- Any action taken that affects farmland
- Examples
 - Building a housing development
 - Building (or widening) a road
 - Installing a pipeline
 - Expanding a sewage treatment plant
 - Developing a landfill
 - Etc...



Federal funds

- Money spent by a federal agency (any agency) on the activity
- Can be any agency (including NRCS)
- Most common agencies in FY2011
 - Rural Development (USDA-RD)
 - Housing and Urban Development (HUD)
 - Department of Transportation (DOT)
 - Environmental Protection Agency (EPA)



Farmlands

- Prime farmlands
- Unique farmlands
- State and locally important farmlands



(7 CFR § 657)



Irreversible conversion

- Land no longer usable for agriculture
- Conversion is “permanent”
 - Nothing lasts forever, but ...
 - Land cannot be “restored” at all or at least not without significant time and expense.
- Some judgment is involved
 - **NOT NRCS DECISION** – depends on funding agency



Exemptions (land)

- Land not considered “farmland” under FPPA
 - Land already “developed” or already irreversibly converted
 - US Census urban areas maps
 - Existing “footprint” including right-of-ways
 - Land already committed to urban development
 - Land committed to water storage

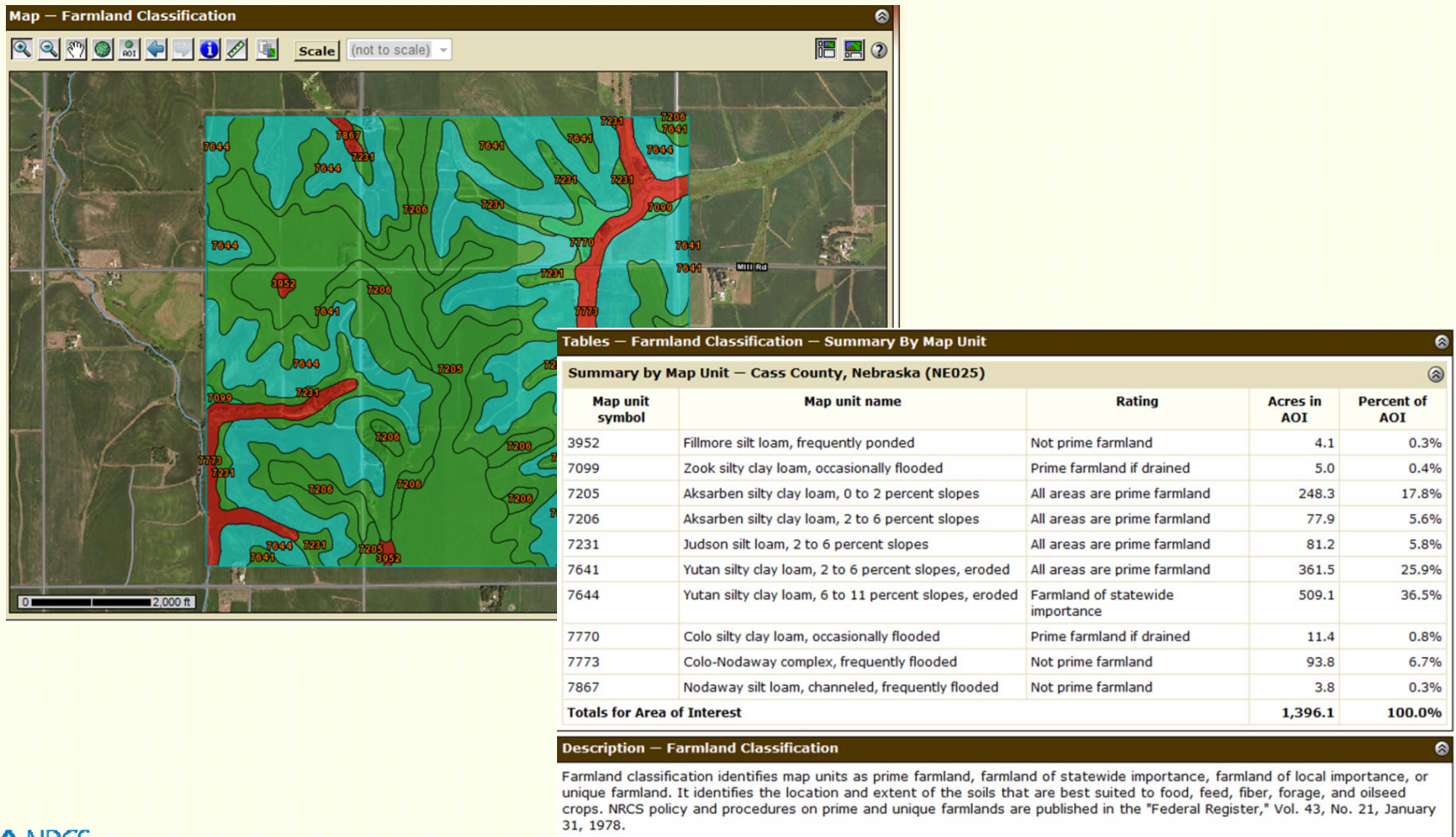


Exemptions (activities)

- Construction of non-farm structures necessary to support ongoing farm operations
 - Barns, manure storage lagoons, access roads, etc.
- Construction / land development for national defense purposes



Web Soil Survey Farmland Classification Report





Federal agency requirements

- Follow the directions!
- The federal agency **must** submit:
 - One original copy of the form (AD-1006 or NRCS – CPA – 106) to NRCS
 - Parts I and III **must** be completed
 - Must include “appropriately scaled maps” indicating the location of the project site(s)
- Fill out parts VI and VII and return final form to NRCS (after NRCS determination)



NRCS requirements

- Determine whether the site(s) contain prime, unique or important farmland
- If FPPA applies – NRCS will complete parts II, IV and V of the form
- Return the form to the applicant and keep a copy for the record
- Response time requirements:
 - 10 working days (if standard)
 - 30 working days if site visit needed or no LE (must inform applicant)



What else?

- Which form?
 - AD-1006 is default
 - NRCS-CPA-106 for corridor projects
- Data sources
 - SSURGO data for prime and unique farmland
 - eFOTG for farmland of state and local importance
 - Many states have this as GIS layer
 - State and local is only “legit” if certified by STC
 - State or local Land Evaluation (LE) values



LESA System for a County

- A LEESA system may already exist and simply need to be updated
- The system may be for a county or an entire state
- Land Evaluation may be a problem in some counties because yield data has been deleted from the database
- Map units may have been added or deleted as well



Land Evaluation Criteria

- Land Evaluation Criteria and Points
 - Soils of an area, such as a county, are evaluated basis of their relative productivity for crops grown locally
 - Land capability classifications are considered
 - Important farmland maps are considered
 - Soils within the local government jurisdiction are examined and given a relative value score from 1 to 100 points
 - This is the Relative Value Rating (Part V) of the Form AD 1006



Land Evaluation Criteria

- Process for using crop yields:
 - Using Web Soil Survey, set AOI to county
 - Go to the **Soil Data Explorer** tab
 - Under the **Vegetative Productivity** tab, select an appropriate yield report and view the rating
 - Highlight the table, copy and paste it into EXCEL

Sanitary Facilities ?

Vegetative Productivity ?

Crop Productivity Index

Forest Productivity (Cubic Feet per Acre per Year)

Forest Productivity (Tree Site Index)

Range Production (Favorable Year)

Range Production (Normal Year)

Range Production (Unfavorable Year)

Yields of Irrigated Crops (Component)

Yields of Irrigated Crops (Map Unit)

Yields of Non-Irrigated Crops (Component)

[View Description](#) [View Rating](#)

View Options ?

Map

Table

Description of Rating

Rating Options Detailed Description

Basic Options ?

Crop

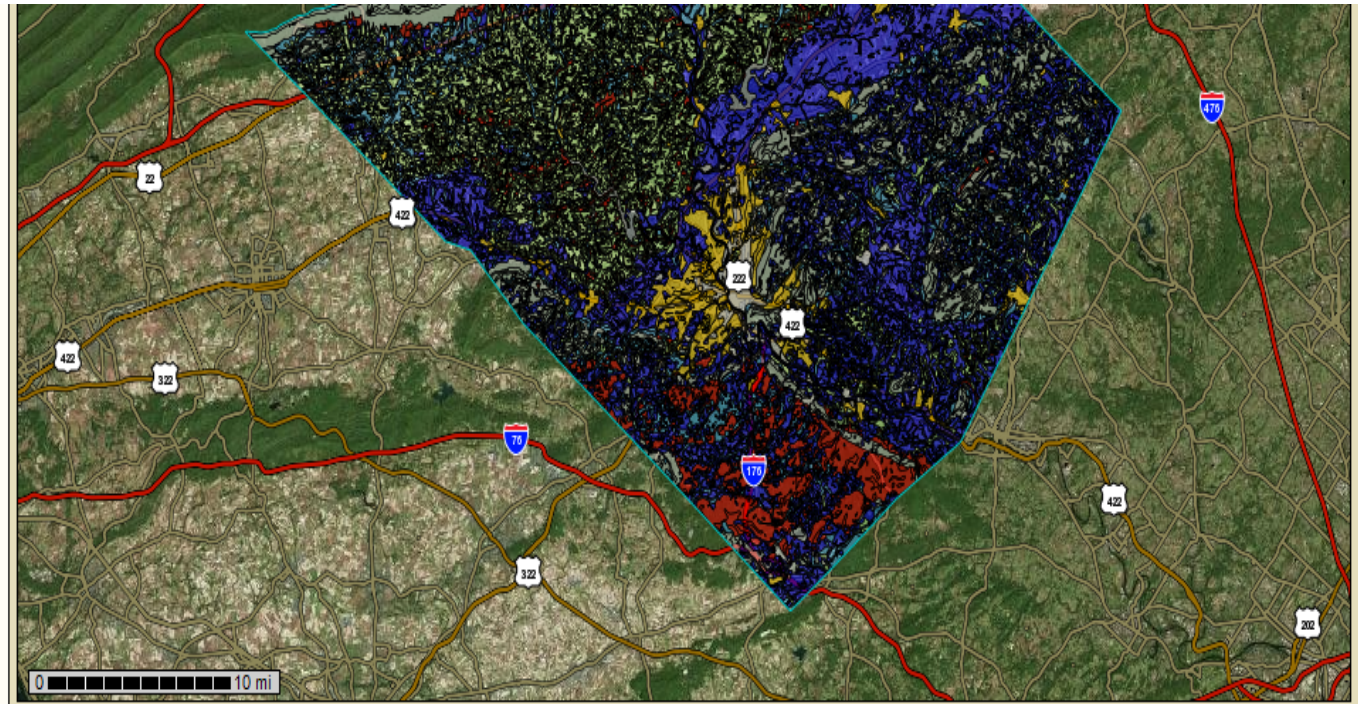
Advanced Options ?

[View Description](#) [View Rating](#)

Yields of Non-Irrigated Crops (Map Unit)

Waste Management ?

Water Management ?



Tables – Yields of Non-Irrigated Crops (Component): Corn (Bu) – Summary By Map Unit

Summary by Map Unit – Berks County, Pennsylvania (PA011)					
Map unit symbol	Map unit name	Rating	Acres in AOI	Percent of AOI	
AbA	Abbottstown silt loam, 0 to 3 percent slopes	95.00	2,308.0	0.4%	
AbB	Abbottstown silt loam, 3 to 8 percent slopes	95.00	502.5	0.1%	
AnA	Andover-Buchanan gravelly loams, 0 to 3 percent slopes	91.32	218.8	0.0%	
AnB	Andover-Buchanan gravelly loams, 3 to 8 percent slopes	91.32	2,352.9	0.4%	
AoB	Andover-Buchanan gravelly loams, 0 to 8 percent slopes, extremely stony		1,312.9	0.2%	
AsB	Athol silt loam, 3 to 8 percent slopes	125.00	1,717.9	0.3%	
AsC	Athol silt loam, 8 to 15 percent slopes	120.00	1,250.8	0.2%	
AuD	Athol-Oatlands silt loams, 15 to 25 percent slopes	98.00	365.7	0.1%	
AwD	Athol-Oatlands silt loams, 8 to 25 percent slopes, extremely bouldery		159.3	0.0%	
BfB	Bedington-Berks complex, 3 to 8 percent slopes	107.74	6,483.2	1.2%	
BfC	Bedington-Berks complex, 8 to 15 percent slopes	98.60	6,583.1	1.2%	
BhD	Berks-Bedington complex, 15 to 25 percent slopes	90.53	3,071.4	0.6%	
RbA	Berks-Waikert complex, 0 to 3 percent slopes	81.04	705.4	0.1%	

Range Production (Favorable Year)

Range Production (Normal Year)

Range Production (Unfavorable Year)

Yields of Irrigated Crops (Component)

Yields of Irrigated Crops (Map Unit)

Yields of Non-Irrigated Crops (Component)

[View Description](#) [View Rating](#)

View Options ?

Map

Table

Description of Rating

Rating Options Detailed Description

Basic Options ?

Crop Bu

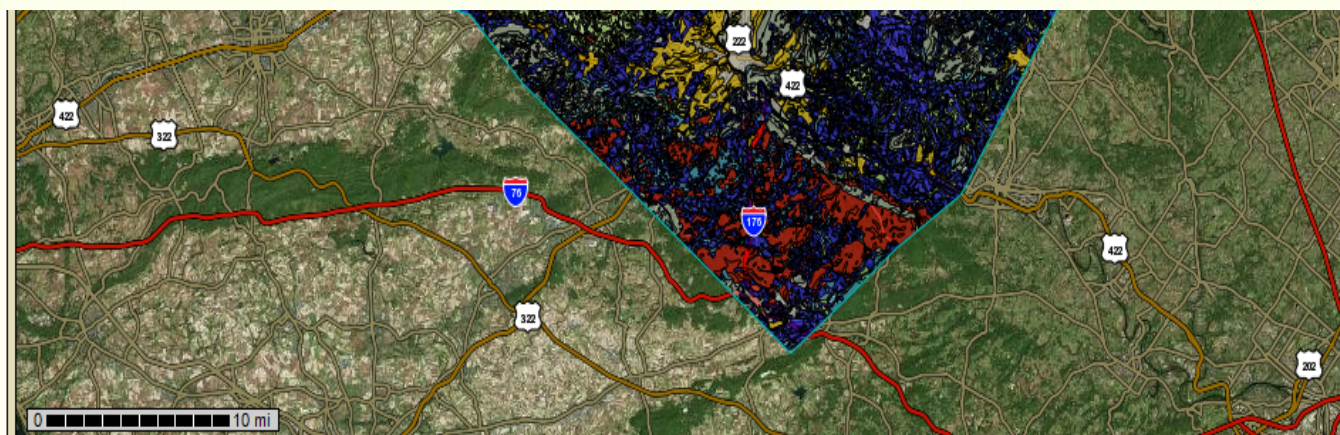
Advanced Options ?

[View Description](#) [View Rating](#)

Yields of Non-Irrigated Crops (Map Unit)

Waste Management ?

Water Management ?



Tables – Yields of Non-Irrigated Crops (Component): Corn (Bu) – Summary By Map Unit

Summary by Map Unit – Berks County, Pennsylvania (PA011)

Map unit symbol	Map unit name	Rating	Acres in AOI	Percent of AOI
AbA	Abbottstown silt loam, 0 to 3 percent slopes	95.00	2,308.0	0.4%
AbB	Abbottstown silt loam, 3 to 8 percent slopes	95.00	502.5	0.1%
AnA	Andover-Buchanan gravelly loams, 0 to 3 percent slopes	91.32	218.8	0.0%
AnB	Andover-Buchanan gravelly loams, 3 to 8 percent slopes	91.32	2,352.9	0.4%
AoB	Andover-Buchanan gravelly loams, 0 to 8 percent slopes, extremely stony		1,312.9	0.2%
AsB	Athol silt loam, 3 to 8 percent slopes	125.00	1,717.9	0.3%
AsC	Athol silt loam, 8 to 15 percent slopes	120.00	1,250.8	0.2%
AuD	Athol-Oatlands silt loams, 15 to 25 percent slopes	98.00	365.7	0.1%
AwD	Athol-Oatlands silt loams, 8 to 25 percent slopes, extremely bouldery		159.3	0.0%
BfB	Bedington-Berks complex, 3 to 8 percent slopes	107.74	6,483.2	1.2%
BfC	Bedington-Berks complex, 8 to 15 percent slopes	98.60	6,583.1	1.2%
BhD	Berks-Bedington complex, 15 to 25 percent slopes	90.53	3,071.4	0.6%
BkA	Berks-Weikert complex, 0 to 3 percent slopes	81.94	705.4	0.1%
BkB	Berks-Weikert complex, 3 to 8 percent slopes	81.94	29,156.4	5.3%
BkC	Berks-Weikert complex, 8 to 15 percent slopes	77.10	57,676.6	10.4%
BkD	Berks-Weikert complex, 15 to 25 percent slopes	72.26	11,314.0	2.0%
BkF	Berks-Weikert complex, 25 to 60 percent slopes	1.96	15,020.0	2.7%
BmA	Birdsboro silt loam, 0 to 3 percent slopes	137.75	88.5	0.0%
BmB	Birdsboro silt loam, 3 to 8 percent slopes	137.63	2,866.9	0.5%

Paste Copy Format Painter Clipboard

Calibri 11 A A

B *I* U [Grid] [Color] [Text Color]

[Align Left] [Align Center] [Align Right] [Justify] [Decrease Indent] [Increase Indent]

Wrap Text Merge & Center

General \$ % [Number Format]

A1 Map unit symbol

	A	B	C	D	E	F	G	H	I	J
1	Map unit	Map unit	Rating	Acres in A	Percent of AOI					
2	AbA	Abbottsto	95	2,308.00	0.40%					
3	AbB	Abbottsto	95	502.5	0.10%					
4	AnA	Andover-f	91.32	218.8	0.00%					
5	AnB	Andover-f	91.32	2,352.90	0.40%					
6	AoB	Andover-Buchanan g		1,312.90	0.20%					
7	AsB	Athol silt l	125	1,717.90	0.30%					
8	AsC	Athol silt l	120	1,250.80	0.20%					
9	AuD	Athol-Oat	98	365.7	0.10%					
10	AwD	Athol-Oatlands silt l		159.3	0.00%					
11	BfB	Bedington	107.74	6,483.20	1.20%					
12	BfC	Bedington	98.6	6,583.10	1.20%					
13	BhD	Berks-Bed	90.53	3,071.40	0.60%					
14	BkA	Berks-We	81.94	705.4	0.10%					
15	BkB	Berks-We	81.94	29,156.40	5.30%					
16	BkC	Berks-We	77.1	57,676.60	10.40%					
17	BkD	Berks-We	72.26	11,314.00	2.00%					
18	BkF	Berks-We	1.96	15,020.00	2.70%					
19	BmA	Birdsboro	137.75	88.5	0.00%					
20	BmB	Birdsboro	137.63	2,866.90	0.50%					
21	Bo	Bowmans	97.5	1,815.60	0.30%					
22	BpB	Brecknock	120	966.8	0.20%					
23	BpC	Brecknock	115	1,028.70	0.20%					
24	BpD	Brecknock	110	539.2	0.10%					



Land Evaluation Criteria

- Process for using crop yields, continued:
 - Sort by crop yield
 - Normalize the highest yield to an index of 100

fppa_Berks_pa - Microsoft Excel

File Home Insert Page Layout Formulas Data Review View JMP Acrobat

Cut Copy Paste Format Painter Clipboard

Calibri 11 A A B I U Font

Wrap Text Merge & Center Alignment

General \$ % , .0 .00 Number

Conditional Formatting as Table Styles

	A	B	C	D	E	F	G
1	Map unit symbol	Map unit name	Rating	Acres in AOI	Percent of AOI		
2	DbA	Duffield silt loam, 0 to 3 percent slopes	162.93	3,553.10	0.60%		
3	DbB	Duffield silt loam, 3 to 8 percent slopes	162.93	40,209.00	7.30%		
4	BmA	Birdsboro silt loam, 0 to 3 percent slopes	137.75	88.5	0.00%		
5	BmB	Birdsboro silt loam, 3 to 8 percent slopes	137.63	2,866.90	0.50%		
6	NaB	Neshaminy silt loam, 3 to 8 percent slopes	133.5	963.8	0.20%		
7	HaB	Hagerstown-Duffield silt loams, 3 to 8 percent slopes	131.41	1,044.20	0.20%		
8	DfC	Duffield-Ryder silt loams, 8 to 15 percent slopes	131.29	8,567.40	1.50%		
9	GeB	Gladstone gravelly loam, 3 to 8 percent slopes	125.94	13,434.90	2.40%		
10	Ro	Rowland silt loam	125.56	412.2	0.10%		
11	AsB	Athol silt loam, 3 to 8 percent slopes	125	1,717.90	0.30%		
12	RaB	Raritan silt loam, 3 to 8 percent slopes	124.02	1,172.60	0.20%		
13	PeB	Penn channery silt loam, 3 to 8 percent slopes	123.5	10,731.30	1.90%		
14	ReA	Readington silt loam, 0 to 3 percent slopes	123.47	2,316.10	0.40%		
15	GnA	Glenville silt loam, 0 to 3 percent slopes	123.16	1,566.40	0.30%		
16	GnB	Glenville silt loam, 3 to 8 percent slopes	123.16	1,367.60	0.20%		
17	NaC	Neshaminy silt loam, 8 to 15 percent slopes	123	1,558.90	0.30%		
18	CmA	Clarksburg silt loam, 0 to 3 percent slopes	122.25	4,343.50	0.80%		
19	CmB	Clarksburg silt loam, 3 to 8 percent slopes	122.11	2,742.80	0.50%		
20	BuB	Buchanan gravelly loam, 3 to 8 percent slopes	122.06	2,081.40	0.40%		
21	RhA	Reaville silt loam, 0 to 3 percent slopes	122.03	78.8	0.00%		
22	ReB	Readington silt loam, 3 to 8 percent slopes	121.86	2,009.10	0.40%		
23	AsC	Athol silt loam, 8 to 15 percent slopes	120	1,250.80	0.20%		
24	BpB	Brecknock channery silt loam, 3 to 8 percent slopes	120	966.8	0.20%		
25	MuA	Murrill gravelly loam, 0 to 3 percent slopes	120	979.7	0.20%		
26	Lv	Linden loam	119.39	865.4	0.20%		
27	Me	Middleburv silt loam	119.39	3,934.90	0.70%		

fppa_Berks_pa - Microsoft Excel

File Home Insert Page Layout Formulas Data Review View JMP Acrobat

Clipboard Font Alignment Number Styles

Calibri 11 A A Bold Italic Underline Merge & Center Wrap Text General

Conditional Formatting Format as Table Cell Styles

F2 $= (C2/162.93)*100$

	A	B	C	D	E	F	G
1	Map unit symbol	Map unit name	Rating	Acres in AOI	Percent of AOI	INDEX	
2	DbA	Duffield silt loam, 0 to 3 percent slopes	162.93	3,553.10	0.60%	100	
3	DbB	Duffield silt loam, 3 to 8 percent slopes	162.93	40,209.00	7.30%	100	
4	BmA	Birdsboro silt loam, 0 to 3 percent slopes	137.75	88.5	0.00%	84.54551	
5	BmB	Birdsboro silt loam, 3 to 8 percent slopes	137.63	2,866.90	0.50%	84.47186	
6	NaB	Neshaminy silt loam, 3 to 8 percent slopes	133.5	963.8	0.20%	81.93703	
7	HaB	Hagerstown-Duffield silt loams, 3 to 8 percent slopes	131.41	1,044.20	0.20%	80.65427	
8	DfC	Duffield-Ryder silt loams, 8 to 15 percent slopes	131.29	8,567.40	1.50%	80.58062	
9	GeB	Gladstone gravelly loam, 3 to 8 percent slopes	125.94	13,434.90	2.40%	77.297	
10	Ro	Rowland silt loam	125.56	412.2	0.10%	77.06377	
11	AsB	Athol silt loam, 3 to 8 percent slopes	125	1,717.90	0.30%	76.72006	
12	RaB	Raritan silt loam, 3 to 8 percent slopes	124.02	1,172.60	0.20%	76.11858	
13	PeB	Penn channery silt loam, 3 to 8 percent slopes	123.5	10,731.30	1.90%	75.79942	
14	ReA	Readington silt loam, 0 to 3 percent slopes	123.47	2,316.10	0.40%	75.78101	
15	GnA	Glenville silt loam, 0 to 3 percent slopes	123.16	1,566.40	0.30%	75.59074	
16	GnB	Glenville silt loam, 3 to 8 percent slopes	123.16	1,367.60	0.20%	75.59074	
17	NaC	Neshaminy silt loam, 8 to 15 percent slopes	123	1,558.90	0.30%	75.49254	
18	CmA	Clarksburg silt loam, 0 to 3 percent slopes	122.25	4,343.50	0.80%	75.03222	
19	CmB	Clarksburg silt loam, 3 to 8 percent slopes	122.11	2,742.80	0.50%	74.9463	
20	BuB	Buchanan gravelly loam, 3 to 8 percent slopes	122.06	2,081.40	0.40%	74.91561	
21	RhA	Reaville silt loam, 0 to 3 percent slopes	122.03	78.8	0.00%	74.8972	
22	ReB	Readington silt loam, 3 to 8 percent slopes	121.86	2,009.10	0.40%	74.79286	
23	AsC	Athol silt loam, 8 to 15 percent slopes	120	1,250.80	0.20%	73.65126	
24	BpB	Brecknock channery silt loam, 3 to 8 percent slopes	120	966.8	0.20%	73.65126	
25	MuA	Murrill gravelly loam, 0 to 3 percent slopes	120	979.7	0.20%	73.65126	
26	Lv	Linden loam	119.39	865.4	0.20%	73.27687	
27	Me	Middlebury silt loam	119.39	3,934.90	0.70%	73.27687	
28	RhB	Reaville silt loam, 3 to 8 percent slopes	119.08	68.1	0.00%	73.0866	
29	Gc	Gibraltar silt loam	119	1,067.50	0.20%	73.0375	
30	EhB	Edgemont channery loam, 3 to 8 percent slopes	118.91	1,110.50	0.20%	72.98226	
31	MuB	Murrill gravelly loam, 3 to 8 percent slopes	118.91	6,281.50	1.10%	72.98226	

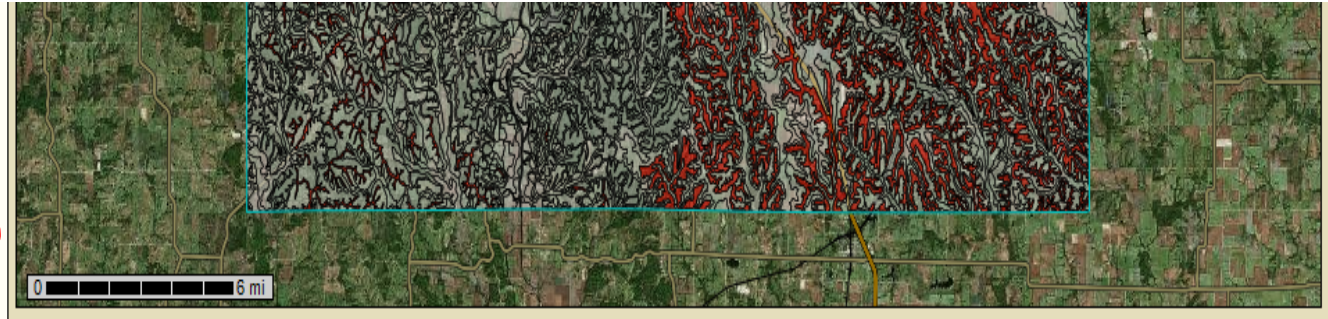


Land Evaluation Criteria

- What if the crop yield data is not there?



Yields of Irrigated Crops (Component)
Yields of Irrigated Crops (Map Unit)
Yields of Non-Irrigated Crops (Component)
Yields of Non-Irrigated Crops (Map Unit)
Cannot run "Yields of Non-Irrigated Crops (Map Unit)": Necessary data not available for specified AOI.
Waste Management
Water Management



Tables — Yields of Non-Irrigated Crops (Component): Corn (Bu) — Summary By Map Unit

Map unit symbol	Map unit name	Rating	Acres in AOI	Percent of AOI
13505	Blackoar silt loam, 0 to 2 percent slopes, occasionally flooded		139.1	0.0%
30027	Armstrong clay loam, 5 to 9 percent slopes, eroded		2,656.7	0.7%
30030	Armstrong clay loam, 9 to 14 percent slopes, eroded		21,360.3	5.9%
30053	Gara clay loam, 14 to 20 percent slopes, severely eroded		371.5	0.1%
30054	Gara clay loam, 9 to 14 percent slopes, eroded		135.0	0.0%
30055	Gara clay loam, 9 to 14 percent slopes, severely eroded		87.4	0.0%
30056	Gara fine sandy loam, 20 to 35 percent slopes, eroded		12,146.4	3.3%
30057	Gara loam, 14 to 20 percent slopes		488.1	0.1%
30058	Gara loam, 14 to 20 percent slopes, eroded		655.7	0.2%
30063	Gara loam, 9 to 14 percent slopes, eroded		11,211.1	3.1%
30094	Keswick clay loam, 5 to 14 percent slopes, eroded		74.6	0.0%
30106	Kilwinning silt loam, 1 to 5 percent slopes		6.8	0.0%
30175	Pershing silty clay loam, 2 to 5 percent slopes, eroded		349.8	0.1%
30211	Vanmeter silty clay loam, 14 to 30 percent slopes		10,191.5	2.8%
30213	Vigar loam, 2 to 5 percent slopes		126.3	0.0%
30214	Vigar loam, 2 to 5 percent slopes, rarely flooded		4,792.3	1.3%
30217	Vigar-Zook-Nodaway complex, 1 to 5 percent slopes		152.4	0.0%
30222	Winnegan clay loam, 14 to 20 percent slopes, eroded		203.7	0.1%
30230	Winnegan loam, 20 to 35 percent slopes, eroded		580.8	0.2%
30243	Vigar loam, 3 to 5 percent slopes, rarely flooded		17.8	0.0%



Land Evaluation Criteria

- Use the **state productivity index**, such as Iowa Corn Suitability Rating, if one exists
- The **National Commodity Crop Productivity Index (NCCPI)** is also available
- Normalize the highest index value in the county to 100

File Home Insert Page Layout Formulas Data Review View JMP Acrobat

Cut Copy Paste Format Painter Clipboard

Calibri 11 A A B I U Font

Wrap Text Merge & Center Alignment

Number \$ % , .00 .00 Number

Conditional Formatting as Table Styles

F2 f_x $=(E2/0.88)*100$

	A	B	C	D	E	F	G
1	Map_Symbol	Map_Unit_Name	Map_Unit_Acres	Non-irr_LCC	Corn_Index	INDEX	
2	30214	Vigar loam, 2 to 5 percent slopes, rarely flooded	4937	2e	0.88	100	
3	36018	Kennebec and Fatima soils, 0 to 2 percent slopes, frequently flooded	8	3w	0.87	99	
4	36031	Nodaway silt loam, 0 to 2 percent slopes, frequently flooded	152	3w	0.86	98	
5	36050	Zook silty clay loam, 0 to 2 percent slopes, occasionally flooded	81	2w	0.85	97	
6	36042	Vesser silt loam, 0 to 2 percent slopes, occasionally flooded	17324	3w	0.81	92	
7	56008	Zook silty clay loam, overwash, 0 to 2 percent slopes, occasionally flo	6806	2w	0.8	91	
8	64033	Vigar-Zook-Excello complex, 0 to 5 percent slopes	4384	3w	0.7985	91	
9	30217	Vigar-Zook-Nodaway complex, 1 to 5 percent slopes	152	4w	0.784	89	
10	36064	Floris silt loam, 0 to 2 percent slopes, occasionally flooded	407	2w	0.75	85	
11	66081	Dockery and Tice silt loams, 0 to 2 percent slopes, occasionally floode	16420	2w	0.7255	82	
12	36025	Landes loam, 0 to 2 percent slopes, frequently flooded	136	3w	0.7	80	
13	30057	Gara loam, 14 to 20 percent slopes	488	6e	0.69	78	
14	54000	Chariton silt loam, 0 to 2 percent slopes, rarely flooded	230	3w	0.69	78	
15	36015	Floris loam, 0 to 2 percent slopes, frequently flooded	3577	3w	0.68	77	
16	13505	Blackoar silt loam, 0 to 2 percent slopes, occasionally flooded	202	2w	0.67	76	
17	36003	Arbela silt loam, 0 to 2 percent slopes, occasionally flooded	29	3w	0.66	75	
18	36062	Arbela silty clay loam, 0 to 2 percent slopes, occasionally flooded	3565	3w	0.61	69	
19	60106	Gifford silty clay loam, 2 to 5 percent slopes	467	3e	0.61	69	
20	66075	Chequest silty clay loam, 0 to 2 percent slopes, occasionally flooded	49	3w	0.59	67	
21	60061	Bevier silty clay loam, 3 to 8 percent slopes	5706	3e	0.57	65	
22	30106	Kilwinning silt loam, 1 to 5 percent slopes	7	3e	0.56	64	
23	50001	Armstrong loam, 5 to 9 percent slopes, eroded	63203	3e	0.55	63	
24	30175	Pershing silty clay loam, 2 to 5 percent slopes, eroded	350	3e	0.54	61	
25	30054	Gara clay loam, 9 to 14 percent slopes, eroded	135	4e	0.53	60	
26	66109	Wabash silty clay loam, 0 to 2 percent slopes, overwash, occasionally	1647	3w	0.52	59	
27	60107	Gifford silty clay loam, 5 to 9 percent slopes, eroded	1940	3e	0.51	58	
28	50012	Putnam silt loam, 0 to 1 percent slopes	1851	3w	0.5	57	
29	30058	Gara loam, 14 to 20 percent slopes, eroded	657	6e	0.5	57	



Site Assessment Criteria

- 7 CFR Chapter VI lists the Site Assessment criteria
- Also included in the FPPA handbook

<http://www.itc.nrcs.usda.gov/wps/portal/nrcs/main/national/landuse/fppa>





Site Assessment Criteria

- Site Assessment Criteria and Points Example
 - Percentage nonurban land use within a mile of proposed project (15 points max)
 - Percentage of the site perimeter that borders nonurban land use (10 points max)
 - Percentage of the site that has been managed for a crop in 5 of the past ten years (15 points max)
 - Is the site subject to local farmland protection (20 points)
 - How close is the site to a built-up area (15 points max)
 - How close is the site to urban infrastructure (15 points)
 - Is the site an average size for the area (10 points)
 - How much land will be made non-farmable (10 points)



Site Assessment Criteria

- Amount of on-farm investment (barns, etc.) (20 points max)
- Are there farm support and markets (5 points max)
- Would removing this farm from production adversely affect other farms and businesses (10 points max)
- Is the proposed land use incompatible with the surrounding agriculture (10 points max)
- **Summation is the Site Assessment Points (Part VI and VII) of the AD-1006**
- **Actual point values are set by the team that makes the LESA in some instances**



U.S. Department of Agriculture

FARMLAND CONVERSION IMPACT RATING

PART I (To be completed by Federal Agency)		Date Of Land Evaluation Request			
Name Of Project		Federal Agency Involved			
Proposed Land Use		County And State			
PART II (To be completed by NRCS)		Date Request Received By NRCS			
Does the site contain prime, unique, statewide or local important farmland? <i>(If no, the FPPA does not apply -- do not complete additional parts of this form).</i>		Yes <input type="checkbox"/>	No <input type="checkbox"/>	Acres Irrigated	Average Farm Size
Major Crop(s)	Farmable Land In Govt. Jurisdiction Acres: %	Amount Of Farmland As Defined In FPPA Acres: %			
Name Of Land Evaluation System Used	Name Of Local Site Assessment System	Date Land Evaluation Returned By NRCS			
PART III (To be completed by Federal Agency)		Alternative Site Rating			
		Site A	Site B	Site C	Site D
A. Total Acres To Be Converted Directly					
B. Total Acres To Be Converted Indirectly					
C. Total Acres In Site		0.0	0.0	0.0	0.0
PART IV (To be completed by NRCS) Land Evaluation Information					
A. Total Acres Prime And Unique Farmland					
B. Total Acres Statewide And Local Important Farmland					
C. Percentage Of Farmland In County Or Local Govt. Unit To Be Converted					
D. Percentage Of Farmland In Govt. Jurisdiction With Same Or Higher Relative Value					
PART V (To be completed by NRCS) Land Evaluation Criterion Relative Value Of Farmland To Be Converted (Scale of 0 to 100 Points)		0	0	0	0

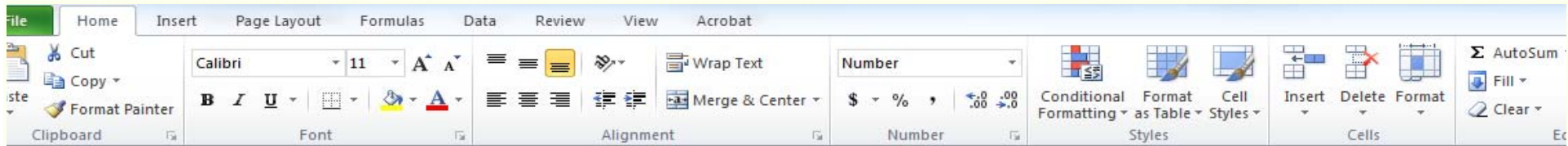
PART VI (To be completed by Federal Agency) Site Assessment Criteria (These criteria are explained in 7 CFR 058.5(b))	Maximum Points				
1. Area In Nonurban Use					
2. Perimeter In Nonurban Use					
3. Percent Of Site Being Farmed					
4. Protection Provided By State And Local Government					
5. Distance From Urban Builtup Area					
6. Distance To Urban Support Services					
7. Size Of Present Farm Unit Compared To Average					
8. Creation Of Nonfarmable Farmland					
9. Availability Of Farm Support Services					
10. On-Farm Investments					
11. Effects Of Conversion On Farm Support Services					
12. Compatibility With Existing Agricultural Use					
TOTAL SITE ASSESSMENT POINTS	160	0	0	0	0
PART VII (To be completed by Federal Agency)					
Relative Value Of Farmland (From Part V)	100	0	0	0	0
Total Site Assessment (From Part VI above or a local site assessment)	160	0	0	0	0
TOTAL POINTS (Total of above 2 lines)	260	0	0	0	0

Site Selected: <input type="text"/>	Date Of Selection <input type="text"/>	Was A Local Site Assessment Used? Yes <input type="checkbox"/> No <input type="checkbox"/>
-------------------------------------	--	---

Reason For Selection:



What is CPA-2?



H44 fx

A B C D E F G H I J K L M N O P Q R S

U.S. DEPARTMENT OF AGRICULTURE
Natural Resources Conservation Service

**EVALUATING IMPLEMENTATION OF THE
FARMLAND PROTECTION ACT (FPPA)
ANNUAL REPORT**

STATE: Fiscal Year: Date of Report:

Person Completing Report: **FEDERAL AGENCY ASSISTED**

Federal Agency Reporting	I	II	III	IV	V	VI	VII	VIII	IX	X	XI	XII	XIII	XIV	XV	XVI	XVII
	NRCS	HUD	FHWA	FEMA	RD	EPA	FAA	OSM	RUS	DE	HRSA	VA	EDA	DOT			
A. AD-1006 and CPA-106 requests received																	
B. AD-1006 and CPA-106 forms completed																	
C. AD-1006 and CPA-106 returned by agency																	
D. Farmland Conversions:																	
1. Total land - acres proposed																	
Total land - acres converted																	
2. Total important farmland - acres proposed	0.0	0.0	0.0	0.0	0.0	0.0	0.0	0.0	0.0	0.0	0.0	0.0	0.0	0.0	0.0	0.0	0.0
Total important farmland - acres converted	0.0	0.0	0.0	0.0	0.0	0.0	0.0	0.0	0.0	0.0	0.0	0.0	0.0	0.0	0.0	0.0	0.0
3. Prime and Unique farmland - acres proposed																	
Prime and Unique farmland - acres converted																	
4. State and Local farmland - acres proposed																	
State and Local farmland - acres converted																	
5. Average weighted relative value proposed																	
Average weighted relative value converted																	
E. Corridors evaluated (number)																	
F. Proposals with at least one alternative in addition to number proposed	0	0	0	0	0	0	0	0	0	0	0	0	0	0	0	0	0
G. Sites where local LESA was available	0	0	0	0	0	0	0	0	0	0	0	0	0	0	0	0	0
H. Sites where a local LESA was used for evaluation	0	0	0	0	0	0	0	0	0	0	0	0	0	0	0	0	0
I. LESA systems on State Conservationist list																	
J. Land evaluation systems developed (total in state):																	

K. Narrative Report (Comments)	NRCS	Natural Resources Conservation Service	FAA	Federal Aviation Administration
	HUD	Housing and Urban Development	OSM	Office of Surface Mining
	FHWA	Federal Highway Administration	RUS	Rural Utilities Service
	FEMA	Federal Emergency Management Agency	DE	Department of Energy
	RD	Rural Development	EDA	Economic Development Agency
	EPA	Environmental Protection Agency	HRSA	Health Resources and Services Administration
	DOT	Department of Transportation	VA	Veterans Administration
	ARS	Agricultural Research Service	USACE	Army Corps of Engineers
	BIA	Bureau of Indian Affairs	BLM	Bureau of Land Management
	BOP	Bureau of Prisons	BOR	Bureau of Reclamation
	CBP	Customs and Border Protection	DOA	Department of Army



File Home Insert Page Layout Formulas Data Review View Acrobat

Cut Copy Format Painter Clipboard H44

Calibri 11 Wrap Text Number

Insert Delete Format Cells AutoSum Fill Clear

A. AD-1006 and CPA-106 request received
B. AD 1006 and CPA-106 forms completed

U.S. DEPARTMENT OF AGRICULTURE
 Natural Resources Conservation Service

EVALUATING IMPLEMENTATION OF THE FARMLAND PROTECTION ACT (FPPA)

STATE: Fiscal Year: Person Completing Report:

Federal Agency Reporting	I	II	III	IV	V	VI	VII	VIII	IX	X	XI	XII	XIII	XIV	XV	XVI	XVII
	NRCS	HUD	FHWA	FEMA	RD	EPA	FAA	OSM	RUS	DE	HRSA	VA	EDA	DOT			
A. AD-1006 and CPA-106 requests received																	
B. AD-1006 and CPA-106 forms completed																	
C. AD-1006 and CPA-106 returned by agency																	
D. Farmland Conversions:																	
1. Total land - acres proposed																	
Total land - acres converted																	
2. Total important farmland - acres proposed	0.0	0.0	0.0	0.0	0.0	0.0	0.0	0.0	0.0	0.0	0.0	0.0	0.0	0.0	0.0	0.0	0.0
Total important farmland - acres converted	0.0	0.0	0.0	0.0	0.0	0.0	0.0	0.0	0.0	0.0	0.0	0.0	0.0	0.0	0.0	0.0	0.0
3. Prime and Unique farmland - acres proposed																	
Prime and Unique farmland - acres converted																	
4. State and Local farmland - acres proposed																	
State and Local farmland - acres converted																	
5. Average weighted relative value proposed																	
Average weighted relative value converted																	
E. Corridors evaluated (number)																	
F. Proposals with at least one alternative to number proposed	0	0	0	0	0	0	0	0	0	0	0	0	0	0	0	0	0
G. Sites where local LESA was available	0	0	0	0	0	0	0	0	0	0	0	0	0	0	0	0	0
H. Sites where a local LESA was used for evaluation	0	0	0	0	0	0	0	0	0	0	0	0	0	0	0	0	0
I. LESA systems on State Conservation Systems																	
J. Land evaluation systems developed (to date)																	
K. Narrative Report (Comments)																	

D.1. Total land-acres proposed
Total land-acres converted

D.2. Total important farmland-acres proposed
Total important farmland-acres converted

D.3. Prime and unique farmland-acres proposed
Prime and unique farmland-acres converted

D.4. State and local farmland-acres proposed
State and local farmland-acres converted

FHWA Federal Highway Administration RUS Rural Utilities Service
 FEMA Federal Emergency Management Agency DE Department of Energy
 RD Rural Development EDA Economic Development Agency
 EPA Environmental Protection Agency HRSA Health Resources and Services Administration
 DOT Department of Transportation VA Veterans Administration
 ARS Agricultural Research Service USACE Army Corps of Engineers
 BIA Bureau of Indian Affairs BLM Bureau of Land Management
 BOP Bureau of Prisons BOR Bureau of Reclamation
 CBP Customs and Border Protection DOA Department of Army

CPA-2 Instructions 100%



Land Use

- Cropland
 - Farmland Protection Policy Act
- Forestry
- Range & Pasture

FPPA Forms and Resources

- Farmland Protection Policy Act Manual
- Farmland Protection Policy Act, Public Law
- FPPA Rule, 7 CFR 658
- Farmland Conversion Impact Rating (Form AD-1006)
- Farmland Conversion Impact Rating, Corridors (Form NRCS CPA-106)
- Evaluating Implementation of the Farmland Protection Act (FPPA) Annual Report (for NRCS use only), NRCS-CPA-2

Annual Reports

- Farmland Protection Policy Act 2011 Annual Report [\[X\]](#)
- Farmland Protection Policy Act 2010 Annual Report [\[X\]](#)
- Farmland Protection Policy Act 2009 Annual Report [\[X\]](#)
- Farmland Protection Policy Act 2008 Annual Report [\[X\]](#)
- Farmland Protection Policy Act 2007 Annual Report [\[X\]](#)
- Farmland Protection Policy Act 2006 Annual Report [\[X\]](#)

Farmland Protection Policy Act

Background



The National Agricultural Land Study of 1980-81 found that millions of acres of farmland were being converted in the United States each year. The 1981 Congressional report, Compact Cities: Energy-Saving Strategies for the Eighties, identified the need for Congress to implement programs and policies to protect farmland and combat urban sprawl and the waste of energy and resources that accompanies sprawling development.

The Compact Cities report indicated that much of the sprawl was the result of programs funded by the Federal Government. With this in mind, Congress passed the Agriculture and Food Act of 1981 (Public Law 97-98)

containing the Farmland Protection Policy Act (FPPA) subtitle I of Title XV, Section 1539-1549. The final rules and regulations were published in the Federal Register on June 17, 1994.

Purpose

The FPPA is intended to minimize the impact Federal programs have on the unnecessary and irreversible conversion of farmland to nonagricultural uses. It assures that to the extent possible federal programs are administered to be compatible with state, local units of government, and private programs and policies to protect farmland. Federal agencies are required to develop and review their policies and procedures to implement the FPPA every two years.

The FPPA does not authorize the Federal Government to regulate the use of private or nonfederal land or, in any way, affect the property rights of owners.

For the purpose of FPPA, farmland includes prime farmland, unique farmland, and land of statewide or local importance. Farmland subject to FPPA requirements does not have to be currently used for cropland. It can be forest land, pastureland, cropland, or other land, but not water or urban built-up land.

Projects and Activities

Projects are subject to FPPA requirements if they may irreversibly convert farmland (directly or indirectly) to nonagricultural use and are completed by a Federal agency or with assistance from a Federal agency.



Deadline for the CPA-2 submission: **Oct. 31, 2013**

For questions, you can call or email:

Mabel Kenyon

emmabelle.kenyon@wdc.usda.gov

202-692-0099

Thank You 😊



Other Issues and Questions





Issues not mentioned in the statute or rules

- Conversion of prime farmland to non-prime farmland
- Non-permanent conversion or How long is “irreversible”?
- How long determinations are valid – is there an “expiration date”?
- Minimum size requirements
- Prime and unique range and forest land and range and forest land of state and local importance



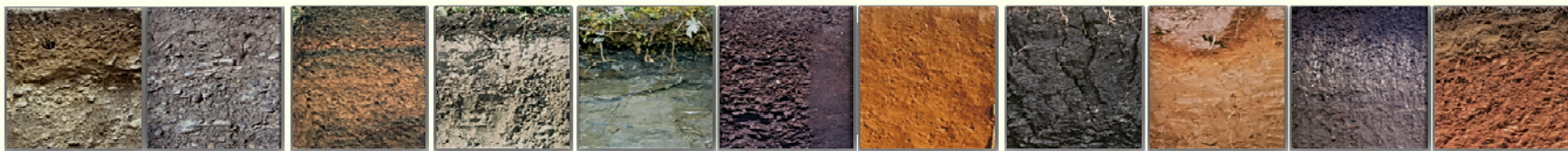
NRCS Activities

NRCS activities (including CTA) are subject to the provisions of FPPA

Virtually all NRCS activities are exempt from FPPA under the "supports existing agricultural use" exemption

FPPA is included in the CPA-52

FPPA could (in theory) apply to easements but would need to be unique circumstances



State requirements

Must have a designated lead FPPA contact
(usually the SSS or Assistant SSS)

Must develop and implement a procedure to
address FPPA requests in compliance with
statutory timelines

- Can be at the state, area and/or local level

Must report annually via the CPA-2



Need more information -- see the FPPA web site:

<http://www.itc.nrcs.usda.gov/wps/portal/nrcs/main/national/landuse/fppa>

The screenshot shows a web browser window displaying the USDA Natural Resources Conservation Service website. The page title is "Farmland Protection Policy Act | NRCS". The navigation menu includes "Topics", "Programs", "Newsroom", and "Contact Us". The main content area is titled "Farmland Protection Policy Act" and includes a "Background" section with a photograph of a field and text explaining the National Agricultural Land Study of 1980-81 and the Compact Cities report. A "Purpose" section is also visible.


USDA Natural Resources Conservation Service
United States Department of Agriculture

Topics | Programs | Newsroom | Contact Us

You are Here: Home / Land Use / Farmland Protection Policy Act

Farmland Protection Policy Act

Background



The National Agricultural Land Study of 1980-81 found that millions of acres of farmland were being converted in the United States each year. The 1981 Congressional report, Compact Cities: Energy-Saving Strategies for the Eighties, identified the need for Congress to implement programs and policies to protect farmland and combat urban sprawl and the waste of energy and resources that accompanies sprawling development.

The Compact Cities report indicated that much of the sprawl was the result of programs funded by the Federal Government. With this in mind, Congress passed the Agriculture and Food Act of 1981 (Public Law 97-98) containing the Farmland Protection Policy Act (FPPA) subtitle I of Title XV, Section 1539-1549. The final rules and regulations were published in the Federal Register on June 17, 1994.

Purpose

The FPPA is intended to minimize the impact Federal programs have on the unnecessary and irreversible conversion of farmland to nonagricultural uses. It assures that to the extent possible federal programs are administered to be compatible with state, local units of government, and private programs and policies to protect farmland. Federal agencies are required to develop and review their policies and procedures to implement the FPPA every two years.

The FPPA does not authorize the Federal Government to regulate the use of private or nonfederal land or in

A landscape photograph of a tropical coastline. In the foreground, there is a sandy beach and the ocean with white waves. The middle ground features a large, steep, forested mountain peak on the left and a larger, more rounded mountain range in the center. A vibrant rainbow arches across the sky, starting from the left mountain and extending towards the center. The sky is filled with soft, grey clouds, suggesting a recent rain shower. The overall scene is lush and scenic.

Questions?